



company profile 2021

**NAMAA
COMPANY
PROFILE
2021**

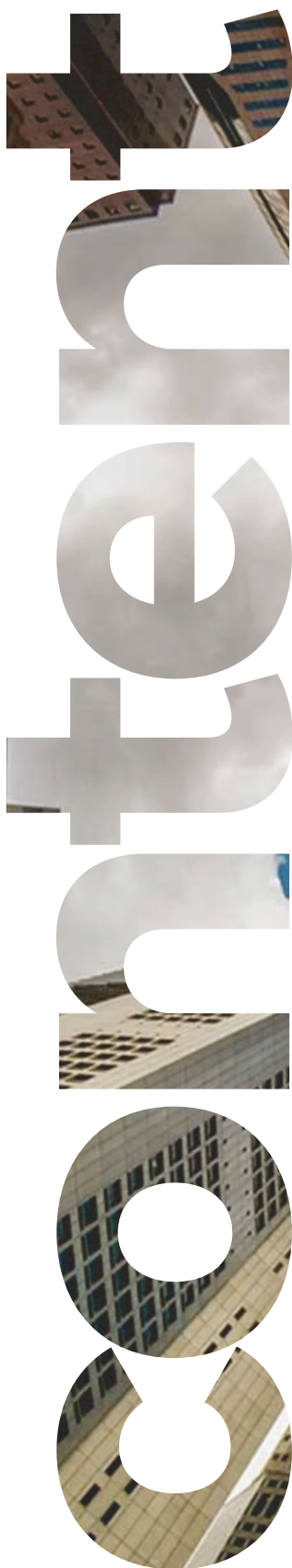


Table of content

01

Who we are

About the company and its Establishing

02

Our Services

- Infrastructure Services
- IT Security Services
- Application Services
- Consulting Services
- Training Services
- Internet of things (IOT)
- IT Operation & Maintenance Services
- Big Data

03

Our Partners

Our Partners list

04

Our Clients

Some of our Permanent clients

05

Our Competitive Value

Our Competitive value

06

Contacts

Contact us info

Who we are

About the company and its Establishing



The beginning of **Namaa Company**

The emergence of Namaa in 2004 was in the form of a Saudi entity based on providing information technology services, whether in the form of services or products and providing them for all different types of companies (small, medium and large). A group of distinguished and distinguished experts who have more experience in the field of information and communications technology have increased than twenty Years of establishing a world of development to be the kiss of life for various companies in establishing a strong relationship with information technology



Our **Vision**

Given the work in the vastly growing IT environment characterized by respectable competition, challenging business processes and the sheer number of databases and operations can be challenged.



Our **Message**

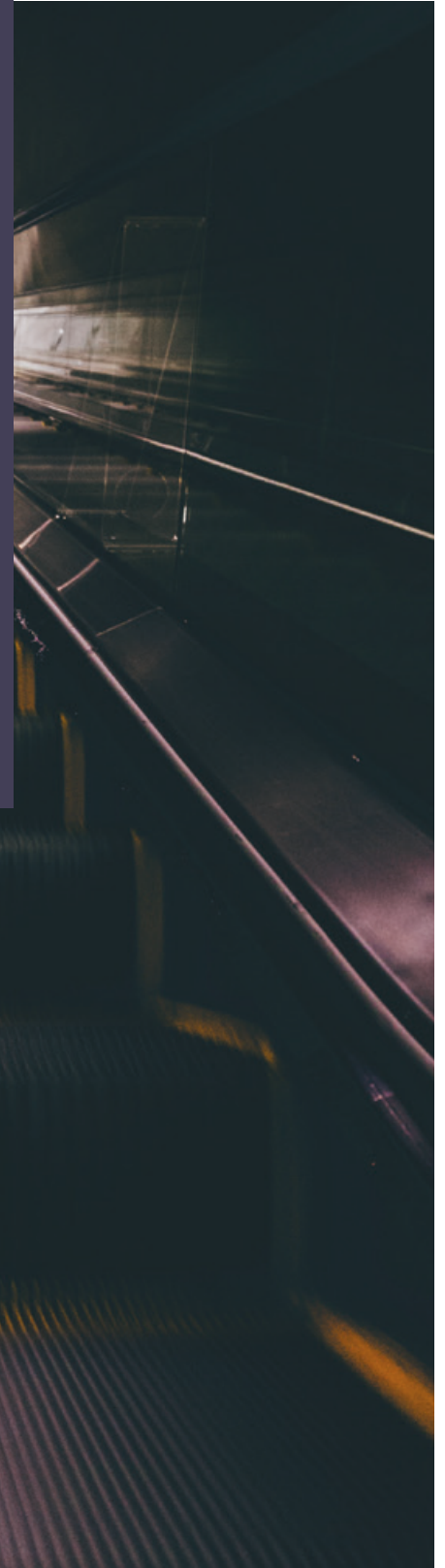
Nama aims to provide information technology solutions, products and services to all of our customers, and this company is specially designed to meet their needs and meet their business requirements. services See also service.

Our services



Infrastructure Services

At Namaa, our expertise in designing, implementing and consulting for infrastructure projects and network technologies of various kinds within the facilities contributes to achieving new levels of business performance. This is secured through providing LAN & WAN network services, extending wired cables, fiber-optic cables, wireless networks, unified communication systems, self-service kiosks systems and data centers until the full array of the fourth category (Tier 4) including air conditioning, fire extinguishing systems, backup energy sources, detection, monitoring and alarm systems. All of the above is secured in full compliance with latest international standards in addition to using the latest technologies and devices while maintaining the integrity and compatibility of all systems and devices to assure provision of the highest efficiency standards.





Core Network Services (LAN/WAN)

This service offers enablement of a WAN/LAN structural formation that is most optimized for the business in addition to end-to-end services for LAN and WAN. This shall include provision of design, implementation, and support for core networks comprised of routers and switches.



IP Telephony

This service minimizes communication redundant costs, maximizes staff productivity and provide flexibility in communications. Namaa supports this technology to simplify information network.



IP-Enabled Kiosks

This service provides a unique function for integrating the kiosk devices with other communications channels and/or migrate to a converged IP-based system to reduce network costs, increase service levels and generate new revenue streams.



Wireless LAN

This service assures implementation of secure wireless LAN connections that enables the branches for a flexible management of mobile wireless traffic flow, workstations and kiosks. It also allows branch staff connect to the network efficiently.



Digital Media Systems

This service provides better impact on the conduct of using electronic services such as, improving the electronic sale and purchase and provision of timely based relevant information for the public.



Core Routing and Switching

This service provides big data network and design center. It also provides networks assessment and routing, alternation of wireless applications, content networks, network monitoring and troubleshooting.



VoIP

This service offers large-scale VoIP design and implementation, unified messaging, voice mail integration, unified faxing, call center design and implementation, voice over wireless, QoS, toll bypass VoIP trunking along with call reporting, voice network monitoring and troubleshooting.



Communications Security

This service provides evaluation and design of IT data, remote / internal penetration testing, firewalls, VPNs, Intrusion Detection System / Intrusion Prevention System (IDS / IPS), encryption, wireless security solutions, private VPNs, secure access control lists ACLs (authentication and authorization), two-factor authentication and self-protection networks.



Wireless Communications

In addition to design and implementation of wireless solutions for integrated and stand-alone units, this field service provides wireless networks, location tracking, Voice over internet Protocol (VoIP) service via wireless security, wireless monitoring and troubleshooting.



Storage Tapes and Media

This service offers installation and implementation of tape libraries, including library sub-components in SAN environments.



Data Center Powering

This service offers deploying data center power systems, other necessary requirements and backups including power customization and uninterruptible power systems (UPS).



Data Center Flooring

To ensure cooling of the room with minimal wasted energy, this service offers installing up-lifted floors with sub-surface cooling systems throughout the data center.



HVAC and Environmental Controls

This service offers deployment of HVAC systems for controlling the data center ambient environment (temperature, humidity, air flow, and air filtering). This service is also offering designing and implementing environmental controlling systems including sensitivity smoke detection (HSSD) and interlocked, multi-zone pre-action dry pipe fire suppression systems as well as leak detection and a UL- approved perimeter lighting protection system to maintain an optimal environment inside the data center.



Data Center Security

This service provides data center security including site landscape security, site and facilities protection against natural catastrophes in addition to restoring functionality after occurrence of such catastrophes hence provision of access control security.



Data Center Planning, Architecture and Designing

This service offers developing the data centers and IT requirements, architecture, data center network readiness assessment, site requirements specification and data center detailed design and blueprints.



Data Center Networking

This service offers deployment of data center improved network that is optimized for computer and wireless access, and that observes acceleration and load balancing.



Data Center Management and Operation

This service offers managing services as follows: desktop management, network management, server management, storage management, data center virtualization management and in addition to managing the end user it Helpdesk.



Storage Optimization and Integration

This service offers a multilayer, clustered storage service that is designed to support storage optimization efforts and to help mitigating data storage challenges by enabling quick implementation of scalable internal or expandable storage system for network or out file system.



Storage Networking

This service offers implementing storage network functionality in a switch point-to-point or cascaded configuration. The service includes hardware installation, cabling, software installation, switches configuration, testing, and documentation.



Data Migration

This service offers implementing the process of migrating and transferring data among storage types, formats, or computer systems starting from migration planning and execution phases, to post-migration activities in addition to arranging detailed reporting and testing.



Near-Online & Offline Storage

This service offers solutions for cheap storage that behaves like online disk arrays, but at a fraction of the cost. When disconnected, tape libraries are deemed to be offline storage. However, they comprise a crucial component in the data security acts.



Storage Planning, Architecture and Designing

This service offers planning, designing and constructing the method in which data will be stored in the customer's computing environment. Design of Data Storage involves a high-standard design, and creation of a highly-specific design that conveys accurate technical details of implementation.

Infrastructure Services

www.namaatec.com

Our services



IT Security Services

To provide total risk management solutions, network and website security, data and application security in addition to systems development security services and protection of source codes and software assets, Namaa's information security services are designed to target integrating the security procedures and tools as an integral component of applications and communication networks. In addition, they comprise a focal support for the potential or current IT infrastructure of our customers.



IT Security



Network Security

This service includes hardware and software required for securing various layers of the network. It is enabled starting from the physical linking between a certain service and an outlet or a specific device in the network, grouping through policies or domains, source / destination or server-based, channel-based, link-based protocol, and so on.



Sites Security

This service offers deploying physical structure of access control systems including serial controllers, serial main and sub-controllers, serial controllers with terminal servers, network-enabled main controllers that support the units of IP controllers and IP readers.



Data Security

This service is crucial for every organization regardless of their nature or activity. Data security caters for protection on data access, data amendment, and data deletion. Actually, a strong data security policy enables an organization move along implementation of cloud computing.



Cybersecurity Solutions

The main objective of this process is to protect information, that is, to ensure the confidentiality, integrity and availability of information, because any event or problem that may threaten the security triangle (confidentiality, Integrity and availability) is deemed to comprise a security threat that must be dealt with and resolved or that necessitates to put in place mechanisms or procedures to avoid or minimize its impact

Namaa is a duly specialized Cybersecurity company, providing Cybersecurity solutions, consultancy, design and implementation that serves and covers the following segments:

- Endpoint Security XDR& EDR.
- DLP & Data Classification.
- Sandboxing Solutions.
- SOC / SEIM solutions.
- Cybersecurity Consultancy Risk Assessment.
- Proxy Solutions.
- Cybersecurity Products Annual Renewals.
- Pen Testing.
- Privilege & identity access Management.
- Forensics & Visibility.
- Web & Email Security.
- UTM and NGFW (Next- Generation Firewall).
- VPN & Encryption.
- Cybersecurity Professional Services

Our services



Applications Services

At Namaa, we help define requirements, write specifications, design, develop, test and integrate software across multiple platforms including web technologies. This enables systems to operate in more flexible operating environments using the full application lifecycle. In the current business environment, continuous changes require increasingly complex application solutions. They often expand beyond organizational and geographic boundaries. Accordingly we provide a full range of application services extending from the development of specialized programs such as electronic services gateways, data services, smart analytics and handheld device applications, which we update and maintain continuously through mechanisms of smart deployment of software packages, upgrades and consulting.





Requirements Engineering

This service offers standard approach and practices by which requirements are collected, analyzed, and synthesized to form justifiable work items required for creating documents' requirements, their multiple types, attributes and traceability in order to manage the software requirements.



Architecture and Design

This service offers comprehensive practices and standard approach for establishing the architecture and design of the software system including developing design models and underlying technology frameworks.



Packages Implementation

This service offers developing, organizing, unit testing and integrating components of the implemented software based on systems architecture and design specifications.



Software Testing

This service offers implementing quality control approach and best practices in software testing to demonstrate that software product or component of the product fulfills its intended purposes of use when placed in its potential environment.



Software Integrated Project Management

This service offers establishing and maintaining plans that determine software project activities and that provide tools for understanding achieves progress in software projects. This is secured through managing the issues, risks, schedules, resources, costs, configuration and quality assurance.



ECM Business Process Management

This service offers identifying, implementation, monitoring, and optimization of business processes in continual and reliable progress across organizations, systems, and applications. This will accordingly facilitate automation of both high-volume transaction processes and complex processes. Our services extend to include assistance and training on use of tools and technology that make up the products array.



ECM Deployment

This service offers proven strategy for defining, deploying, and supporting enterprise content management across the organization, hence facilitating business scalability and user reliability.



Systems Reverse Engineering

This service offers transferring the functionality and architecture of existing systems and applications into clusters, functions, codes and data. NAMA A possesses the resources, tools and expertise that assist in the process of analyzing the current applications and data systems held by corporations and hence enable their realization, design and engineering.



Systems Fabrication and Assembly

This service provides developing, fabricating, unit testing and integrating system components using Component-Based Development (CBD) approach and rewriting and migrating of legacy systems applications to be enabled within a modern and self-contained application components, libraries and protocols.



Data Conversion & Migration

This service offers implementing the process of migrating and converting data from legacy data warehouses, formats and computer systems to the new platform starting from the phase of migration and implementation planning, to post-migration activities in addition to detailed reporting and testing.



Systems Re-Platforming

This service offers legacy systems applications migrated from one physical environment to another maintaining the minimal impact to business continuity.



Modernization Planning, Architecture and Designing

This service offers developing roadmap and detailed plan identifying modernization key business objectives and the path to achieve them. This roadmap highlights risks, corroborate expected results, and ensure that user, process, and technology issues are accurately understood and aligned with business priorities.



Business Intelligence

This service offers architecting, creating, and deploying secure, high-performance BI environment using latest technologies that are in line with the organization's business goals.



Portals & Enterprise Collaboration

This service offers developing full blown brand portals using portals technologies including understanding of advanced styles, catchy site templates, and base entry methods following our approach to align with business needs and fulfillment of users requirements.



E-Archiving Services

The application of electronic content management solutions is the right solution for companies and governments to develop and improve administrations and departments and to reach the full utilization of data and information. However, this solution is not complete without the provision of integrated, logically sequenced content that is logically stored in the new electronic data warehouse. The process of transferring paper content to the electronic data warehouse is usually stressful and difficult. It contains many phases comprised of: receiving, separating, scanning, improving the quality of the electronic version, indexing and reordering, quality control, and finally returning the documents to the paper archive. The Namaa Company has developed a unique methodology to manage the electronic archiving process covering all of the abovementioned phases and using multiple types of scanners in addition to deployment of global software such as LaserFish, that enable Namaa manage the archiving process in the best way.



Enterprise resource planning ERP

Namaa World, the golden partner of Oracle, has great experience in design and implementation of corporate solutions, integration with systems, and technical and technological consulting, which enabled it to provide high-quality services and solutions to achieve the highest levels of performance in corporations and enterprises through Oracle applications in various government sectors within the Kingdom of Saudi Arabia. In addition to the experiences in the telecommunications sector, service sector and private sector, that qualified the company to obtain the ISO certificate, the company provides the following services: Consulting services for the implementation of Oracle applications Development, modification and extensions services for Oracle applications and further, the Technical consulting services for Oracle applications



Government resource planning GRP

The government resource planning system is categorized as one of the systems that functions on combining the information and processes of the organization in one system that contains several systems, processes and procedures and configuring all of them in one database. Such systems contain subsystems such as the financial system, personnel system, procurement system, and materials management system (stores & warehouses). The main objective of these systems is to enable government agencies complete their administrative and financial work with high efficiency and performance, to be able to exchange data among them.

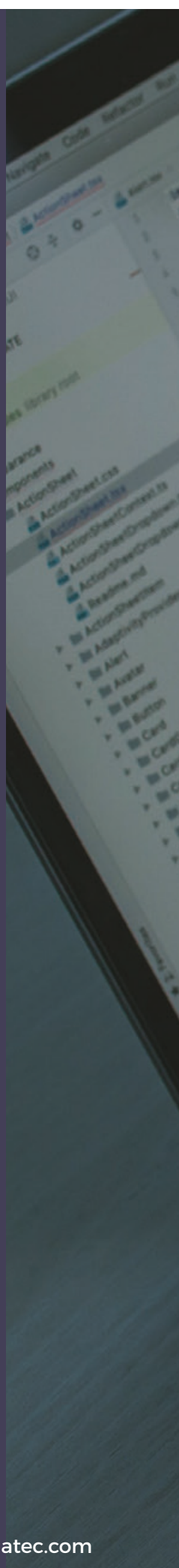
Our Services

To provide consultation services in the field of continual business development in compliance with generally applicable standard, value-wise and best specifications reachable.

To provide technical and professional cadres with variable experiences to enable accomplishment of their entities' objectives.

To build high-spec systems that meet the needs of development

To build a strong comprehensive database for all sectors and businesses





Applications Services

Our services



Consulting Services

Namaa provides a range of professional services to the governmental and private sectors addressing the best ways in which they should use their resources. Such professional services enable them identify strengths and weaknesses, and how to convert weaknesses into strengths while empowering points of strength to enable reaching target business objectives. In addition, the company, in coordination with teams dedicated by such entities, will implement, publish and supervise the processes of assessment, re-engineering, implementation and evaluation. This will enable such entities enhance the efficiency of software applications and focus on more innovation and competitiveness advantage. This is secured through provision of specialized consulting services based on knowledge in the field of capacity and maturity models for information technology by focusing on improving the work necessary to build and maintain software applications and also through provision of an integrated architecture for application and quality life cycles.





Lifecycle Implementation Management

This services of special applications life cycle management are designed to help clients manage the entire life cycle for one or more applications within the client organization. This is done through utilizing a set of proven processes supported by tools comprised of the team members and activities.



Lifecycle Test Management

This service offers a proven approach to demonstrate whether the product or its component fulfills its intended use when placed in its potential environment. It also determines how to ensure that the selected work products in the project fulfill their designated requirements.



Lifecycle Project consolidation

This service offers a proven approach to design and maintain plans that determine activities of the programming project. It provides an accurate understanding of the progress achieved in the project of programing. This will enable taking best applicable corrective measures whenever project's performance deviates significantly from the pre-defined plan. Such plans target to identify potential problems before they occur and to track the activities of risk or hazard remedying and to recall them, when required along life span of the product or the project to enable mitigating passive impacts that might influence accomplishment of target objectives and project's management.



Process Optimization Services

This service offers a proven approach to demonstrate whether the product or its component fulfills its intended use when placed in its potential environment. It also determines how to ensure that the selected work products in the project fulfill their designated requirements.



CMMI Assessment Services

This service offers various assessments based on CMMI to identify the strengths and potentialities for improving the client's organization with regard to CMMI. We expect our assessments to reach tangible and accurate findings about the strengths and weaknesses of the organization. Such findings comprise a reliable starting point upon which you initiate planning for the next steps to improve your CMMI initiative.



CMMI Implementation Services

This service provides methods, processes and consultations to enable reaching the CMMI maturity level successfully as one of the target objectives. NAMAA consultants are distinguished with long term of experience in CMMI and their improvement processes. They bring knowledge, methods and techniques directly to projects and further support client team along their tasks of improvement.



Enterprise Project Management Services

NAMAA Enterprise Project Management (EPM) services help streamlining the processes of governance and implementation of projects along their life cycles. Starting from phases of recommendation, until tracking the findings after implementation, Namaa services support decision-making processes, communication, risk management and productivity within process of management. Our projects management (EPM) services help the client improve quality and project success rates, reduce cycle times and increase productivity, hence increasing the ROI across the portfolio.



Governance

Governance is the set of structures and processes necessary to direct and control the corporation, define and disseminate the rights and liabilities among the key participants in the same corporation. It assures that shareholders, BOD members and managers are fully aware and acquainted to them. It also determine the rules and procedures for taking decisions related to the company's affairs.

Our Services

To help in creating a complete system for the governance of work systems at the level of services provided to clients and linking them to the governance of work systems and information and communication technology's work systems as well.

To elevate the standards of performance though monitoring the performance of such systems and the KPIs related to each system.

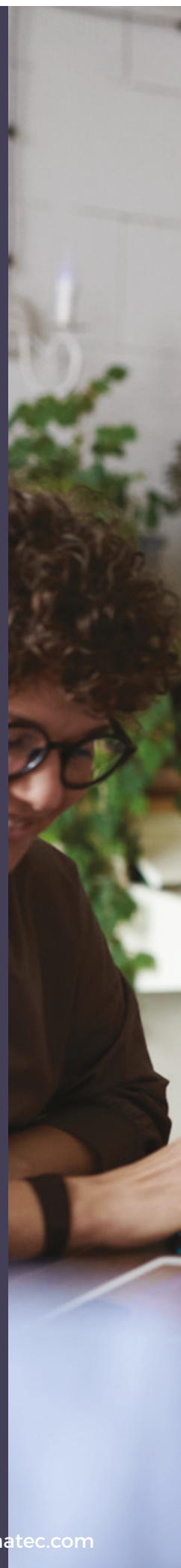
To rely on a unified and standard framework to structure the map of concerned entities at all of the levels mentioned herein and to link them dynamically in addition to testing the effectiveness and efficiency of such framework before starting the process of architecture.

To use international standard tools that help the concerned parties to facilitate trading and not to rely solely on individuals, hence this increases the value of institutional architecture.

To increase the standards of security

COBIT (Control Objectives for Information and Related Technologies)

National Enterprise Architecture "NORA"



A man with dreadlocks and glasses, wearing a maroon sweater, is smiling while working on a laptop. He is in a modern office setting with shelves in the background holding various plants and decorative items. The text 'Consulting Services' is overlaid in large red letters.

Consulting Services

Our services



Training Services

Our Goals

To Develop the knowledge, skills and attitudes of trainees to keep pace with scientific and technological development, and to improve processes of teaching and learning and to save time, money and effort.

To qualify educational highly efficient cadres compatible with educational field requirements.

Our Services

To provide renewable training programs, with high quality, and originality values, functioning within a comprehensive system, an efficient work team, effective social responsibility, and sustainable development in the educational field.



Training

E-Training (Distance Training & Virtual Training)

Our Goals

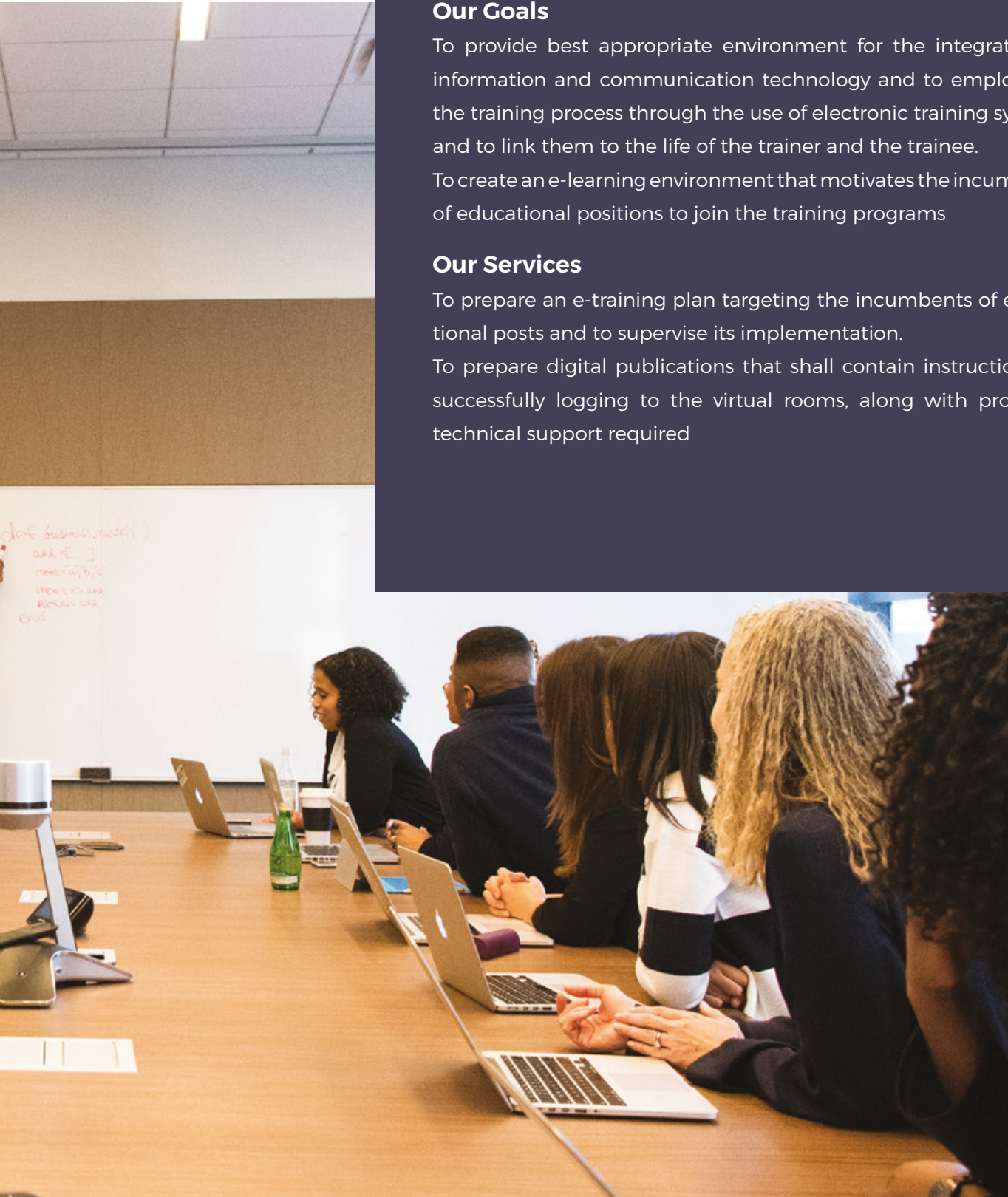
To provide best appropriate environment for the integration of information and communication technology and to employ it in the training process through the use of electronic training systems and to link them to the life of the trainer and the trainee.

To create an e-learning environment that motivates the incumbents of educational positions to join the training programs

Our Services

To prepare an e-training plan targeting the incumbents of educational posts and to supervise its implementation.

To prepare digital publications that shall contain instructions for successfully logging to the virtual rooms, along with providing technical support required



Our offering in

Internet of things IOT

Domains we Cover

Smart Homes
Enterprises
Utilities
Mobilities

Scope of Components

Active and Passive Devices
Sensors
IoT Data
Modems
Radio Transports
Publish-Subscribe Systems
Microcontrollers (MCUs)
Firmwares
Power Sources
NetworkS
Network Servers

Gateways We Support

Wireless Access Point (WAP)
Protocol Translation
Remote Management
Runtime Monitoring
Control Logic Hosting

IOT Platforms

Device Registry
Device Profile
Firmware Management
Scheduling
Security Monitoring
Device Provisioning
Discovery Service
Distribution Middleware
Service Charging
Connectivity Management Functions
Application Enabling Functions
Control Logic Hosting

Other services

IT Operation & Maintenance Services

Namaa World Company is one of the leading companies in the field of information technology and computer operation. We employ highly advanced experience gained through supporting many huge organizations in both the governmental and private sectors possessing highly advanced infrastructure in computing. Our team deploys professional and qualified information technology specialists in the field of information technology, they are fully enabled to develop computer and information technology systems. They are highly competent in provision of technical support required. They are responsible for accurate analysis and adequate understanding for the needs of our clients and care for details of the services rendered and approving potential plans to support computer infrastructures

Since incorporation of Namaa World company in the year 2004 , we sought to provide professional IT O&M to services to elevate the standards of services and fulfill needs of our clients in several sectors all over Saudi Arabia

Our services are include

- To provide experienced and qualified engineers and technicians.
- To develop and upgrade IT systems.
- To prepare and supervise managed IT systems.
- To providing technical solutions in periodic basis to rise to international standards.
- To providing technical consultations to secure provision of innovative solutions.

IT Operation

A close-up photograph of a person's hand plugging a white Ethernet cable into a network switch. The switch is part of a server rack, and many other cables (white and blue) are visible, some plugged into the switch and others hanging loosely. The background is slightly blurred, showing more of the server rack environment.

www.namaatec.com

Our services - IT Operation & Maintenance Services

Other services

Big Data

A big data is analytics solutions turning data into a major competitive advantage, empowering managers to take data-driven decisions confidentially, and to utilize e-Learning creatively hence improves operational efficiency and customer experience.

Our services

We provide consulting services for design of cloud, on-premises, and hybrid big data solutions that convert your data into actionable insights.

We deliver big data solutions that include the following architecture components: a data lake, a data warehouse, ETL processes, data ingestion, data processing, data visualization and dashboards. We prepared data quality management and data security practices. We implement advanced data science and machine learning solutions to let businesses enjoy predictive analytics and generate insights.

We create and support the infrastructure for your big data analytics solution, get your data extracted and cleaned, and machine learning models trained and tuned to assist your organization to unlock the power of data and become a data-driven organization.

We'll provide you with

- An implementation strategy and a plan.
- A detailed implementation roadmap.
- Solution architecture and design.
- Recommendations for technology stack.
- Recommendations for data quality.
- A user adoption strategy.

Big Data

www.namaatec.com

Our Partners

Our Partners list



Our Clients

Some of our Permanent clients





Our Competitive Value

Accurate understanding for the operation nature of the technical and logistical platforms, in particular the possibilities and methods of applying them in governmental environments, including the integration of services, whether with internal systems or external parties.

Previous experience in developing, installing, implementing, managing and operating electronic services and platform applications, managing and developing all work paths and electronic service engines.

Availability of expertise, technical personnel and advice to the company specialized in managing and operating platforms, services and applications.

Deep experience in developing systems using standardized and internationally agreed methods such as CMMI.



SCAN ME

COMMUNICATE YOUR STORY

support@namaatec.com

Riyadh, Kingdom Of Saudi Arabia

Phone: +966 11 4660664

Fax: +966 11 2074788

P.O. Box 60444, Riyadh 11454

 fb.com/namaatec

 linkedin.com/namaatec

 twitter.com/namaatec